

PRODUCT DATA SHEET

Standing: 2024-09-09

LAUDA Hydro H 8

Water bath 115 V; 60 Hz

Part Number: L002912

Features

- Simple to operate water bath
- TFT display with clear display of all process data
- Setting and displaying temperature values in increments of 0.1°C.
- Setting the timer's time values in hours (h) and minutes (min).
- Membrane keypad with concise symbols
- Digital setpoint adjustment
- Adjustable trigger points for over- and under-temperature alarms up to max. +/- 10 K
- Temperature display can be switched from °C to °F
- 1-point temperature controller
- Optical and acoustic alarm for low-level and over/under temperature
- as well as for sensor break/short-circuit
- Electronic monitoring of the temperature controller
- Three application-specific timer functions.
- Bath interior, cover, sieve plate and heating element are made of stainless steel.
- Bath vessel with drain valve
- Heat insulating lid made of stainless steel, double-walled with inner curvature
- prevents condensate from dripping back into the vessels
- Lid and perforated tray as standard.



Working temperature min.
25 °C



Working temperature max.
100 °C

LAUDA DR. R. WOBSEY GMBH & CO. KG
Laudaplatz 1 • 97922 Lauda-Königshofen • DE

T + 49 (0) 9343 503-0
info@lauda.de • www.lauda.de
WEEE-Reg.-Nr.: DE 66 42 40 57

Kommanditgesellschaft: Sitz Lauda-Königshofen
Registergericht Mannheim • HRA 560069

Persönlich haftende Gesellschafterin:
LAUDA DR. R. WOBSEY Verwaltungs-GmbH
Sitz Lauda-Königshofen
Registergericht Mannheim • HRB 560226

Geschäftsführer:
Dr. Gunther Wobser (Vors.), Dr. Mario Englert,
Dr. Marc Stricker
Beirat: Dr. Gerhard Wobser

PRODUCT DATA SHEET

Standing: 2024-09-09

LAUDA Hydro H 8
Water bath 115 V; 60 Hz
Part Number: L002912

Technical Features

Working temperature range	25 ... 100 °C
Ambient temperature range	10 ... 40 °C
Temperature stability	0.1 ± K
Heater power max.	1 kW
Size of bath (W x D x H)	245 x 200 x 165 mm
Bath volume min. / max.	3.8 / 7.0 L
Overall dimensions (WxDxH)	340 x 395 x 275 mm
Weight	10 kg
Power supply	115 V; 60 Hz
Power plug	Power cord with plug (NEMA 5-15P)

Reserve technical changes

LAUDA DR. R. WOBSEY GMBH & CO. KG
Laudaplatz 1 • 97922 Lauda-Königshofen • DE

T + 49 (0) 9343 503-0
info@lauda.de • www.lauda.de
WEEE-Reg.-Nr.: DE 66 42 40 57

Kommanditgesellschaft: Sitz Lauda-Königshofen
Registergericht Mannheim • HRA 560069

Persönlich haftende Gesellschafterin:
LAUDA DR. R. WOBSEY Verwaltungs-GmbH
Sitz Lauda-Königshofen
Registergericht Mannheim • HRB 560226

Geschäftsführer:
Dr. Gunther Wobser (Vors.), Dr. Mario Englert,
Dr. Marc Stricker
Beirat: Dr. Gerhard Wobser

PRODUCT DATA SHEET

Standing: 2024-09-09

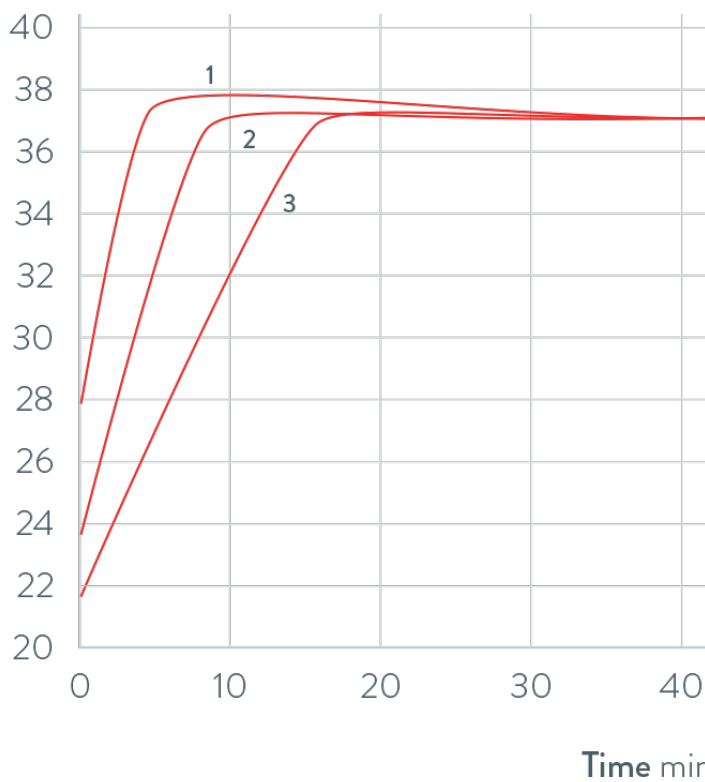
LAUDA Hydro H 8

Water bath 115 V; 60 Hz

Part Number: L002912

HEATING PERFORMANCE Heat transfer liquid: Water, bath closed

Bath temperature °C



- 1 H 8
- 2 H 8 A
- 3 H 22

Reserve technical changes

LAUDA DR. R. WOBSEY GMBH & CO. KG
Laudaplatz 1 • 97922 Lauda-Königshofen • DE

T + 49 (0) 9343 503-0
info@lauda.de • www.lauda.de
WEEE-Reg.-Nr.: DE 66 42 40 57

Kommanditgesellschaft: Sitz Lauda-Königshofen
Registergericht Mannheim • HRA 560069

Persönlich haftende Gesellschafterin:
LAUDA DR. R. WOBSEY Verwaltungs-GmbH
Sitz Lauda-Königshofen
Registergericht Mannheim • HRB 560226

Geschäftsführer:
Dr. Gunther Wobser (Vors.), Dr. Mario Englert,
Dr. Marc Stricker
Beirat: Dr. Gerhard Wobser