

PRODUCT DATA SHEET

Standing: 2025-01-16

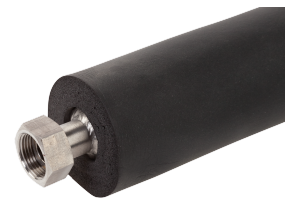
Metal tube MXK300 M30x1.5 to M30x1.5

DN 20, length 3000 mm

Part Number: LZM 089

Features

- Conical sealing
- Insulating material for cold applications, closed-pore



Technical Features

Operating temperature range

-90 ... 150 °C

Connection 1 thread (inside)

M30 x 1,5

Connection 2 thread (inside)

M30 x 1,5

Length

300 cm

Material inside

Stainless steel

Reserve technical changes

LAUDA DR. R. WOBSEY GMBH & CO. KG
Laudaplatz 1 • 97922 Lauda-Königshofen • DE

T + 49 (0) 9343 503-0
info@lauda.de • www.lauda.de
WEEE-Reg.-Nr.: DE 66 42 40 57

Kommanditgesellschaft: Sitz Lauda-Königshofen
Registergericht Mannheim • HRA 560069

Persönlich haftende Gesellschafterin:
LAUDA DR. R. WOBSEY Verwaltungs-GmbH
Sitz Lauda-Königshofen
Registergericht Mannheim • HRB 560226

Geschäftsführer:
Dr. Gunther Wobser (Vors.), Dr. Mario Englert,
Dr. Marc Stricker
Beirat: Dr. Gerhard Wobser