

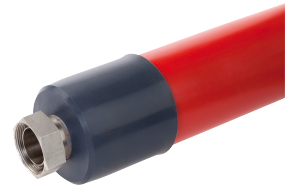
## PRODUCT DATA SHEET

Standing: 2025-01-16

Metal tube M30X200 S M30x1.5 to M30x1.5  
 DN 20, length 2000 mm; -100...350 °C  
 Part Number: LZM 092

### Features

- Corrugated metal hose for temperature control with different heat transfer liquids
- Multilayer insulation, suitable for wide temperature ranges
- Marking of the hose with permissible temperature range and maximum operating pressure
- Conical sealing



### Technical Features

Operating temperature range	-100 ... 350 °C
Operating pressure	-0.3 ... 10,0 bar in the operating temperature range
Connection 1 thread (inside)	M30 x 1,5
Connection 2 thread (inside)	M30 x 1,5
Length	200 cm
Material inside	Stainless steel
Material outside	Smooth silicone hose with silicone end caps
Vacuum resistance	100 % for 0 to 50 °C
Classification	UL 94 HB

Reserve technical changes

LAUDA DR. R. WOBSEY GMBH & CO. KG  
 Laudaplatz 1 • 97922 Lauda-Königshofen • DE

T + 49 (0) 9343 503-0  
 info@lauda.de • www.lauda.de  
 WEEE-Reg-Nr.: DE 66 42 40 57

Kommanditgesellschaft: Sitz Lauda-Königshofen  
 Registergericht Mannheim • HRA 560069

Persönlich haftende Gesellschafterin:  
 LAUDA DR. R. WOBSEY Verwaltungs-GmbH  
 Sitz Lauda-Königshofen  
 Registergericht Mannheim • HRB 560226

Geschäftsführer:  
 Dr. Gunther Wobser (Vors.), Dr. Mario Englert,  
 Dr. Marc Stricker  
 Beirat: Dr. Gerhard Wobser