

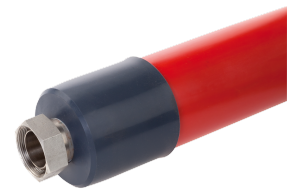
PRODUCT DATA SHEET

Standing: 2025-01-16

Metal tube M38X100 S M38x1.5 to M38x1.5
 DN 25, length 1000 mm; -100...350 °C
 Part Number: LZM 094

Features

- Corrugated metal hose for temperature control with different heat transfer liquids
- Multilayer insulation, suitable for wide temperature ranges
- Marking of the hose with permissible temperature range and maximum operating pressure
- Conical sealing



Technical Features

Operating temperature range	-100 ... 350 °C
Operating pressure	-0.3 ... 10,0 bar in the operating temperature range
Connection 1 thread (inside)	M38 x 1,5
Connection 2 thread (inside)	M38 x 1,5
Length	100 cm
Inner diameters	25 mm
Outer diameter	78 mm
Material inside	Stainless steel
Material outside	Smooth silicone hose with silicone end caps
Vacuum resistance	100 % for 0 to 50 °C
Classification	UL 94 HB

Reserve technical changes

LAUDA DR. R. WOBSEY GMBH & CO. KG
 Laudaplatz 1 • 97922 Lauda-Königshofen • DE

T + 49 (0) 9343 503-0
 info@lauda.de • www.lauda.de
 WEEE - Reg.-Nr.: DE 66 42 40 57

Kommanditgesellschaft: Sitz Lauda-Königshofen
 Registergericht Mannheim • HRA 560069

Persönlich haftende Gesellschafterin:
 LAUDA DR. R. WOBSEY Verwaltungs-GmbH
 Sitz Lauda-Königshofen
 Registergericht Mannheim • HRB 560226

Geschäftsführer:
 Dr. Gunther Wobser (Vors.), Dr. Mario Englert,
 Dr. Marc Stricker
 Beirat: Dr. Gerhard Wobser